

# ANNUAL REPORT 2025



Evangelical  
Lutheran Church  
in America





# ANNUAL CONGREGATIONAL MEETING OPENING LITURGY

Recognizing that our faith is a living, busy, active and mighty thing, may the grace of our Lord Jesus Christ and the communion of the Holy Spirit be with each of you. **And also with you.**

Teach us to love you with all our heart, soul, mind and strength.

**Receive our prayer, O God.**

Descend on our hearts, that we may love others in the ways

Jesus loves us.

**Receive our prayer, O God.**

Empower us to be enthusiastic in pursuing your vision for our congregation. **Receive our prayer, O God.**

Move us to engage issues in our community in Christlike ways, and to pursue deep and authentic relationships with those with whom we serve and partner.

**Receive our prayer, O God.**

Strengthen us to face the barriers we encounter in doing your work, learning to work with others amid disagreement.

**Receive our prayer, O God.**

Give us the ability to adapt to the cultural, economic and social changes that occur in the neighborhoods we serve.

**Receive our prayer, O God.**

Guide us to be a healthy congregation that learns from its failures as well as its successes and offers wisdom to others.

**Receive our prayer, O God.**

As we strive to become the church that we proclaim to be, raise up leaders who focus on the gospel of freedom, forgiveness and reconciliation as given to us through God's indescribable act of love in the death and resurrection of Jesus Christ. Renew us daily in our baptism, that we may discover vitality in our relationships with you, each other and those we serve in the world.

**Amen.**

## Founded on Faith



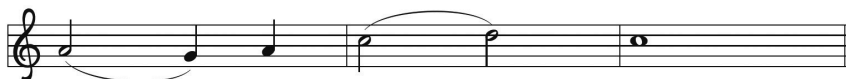
1 Found - ed on faith, the church— a - live by grace—  
2 Your cross, O Christ, re - news our life each day.  
3 E - quipped by prayer, we live the Spir - it's call.  
4 Grow - ing in grace for God's cre - at - ed earth,  
5 Found - ed on faith, called forth, em - pow' red to serve,



pro - claims the gos - pel here and ev - 'ry place.  
Bap - tized in you, we learn and teach and pray.  
Em - pow' red to serve with gifts, both great and small,  
we yearn for jus - tice, peace, and hu - man worth;  
we share God's end - less love with - out re - serve.



The word of God re - sounds through time and space:  
Fed by your love, with thank - ful hearts, we say:  
we bring the liv - ing hope of God to all.  
a world re - stored; a faith - ful, car - ing church.  
Then let us shout a - loud the liv - ing Word!



Al - le - lu - ia!

*All Creation Sings, 1048*

Text and music © 2017 Paul D. Weber, admin.  
Augsburg Fortress. Reproduced by permission.

## A MESSAGE FROM BISHOP MARTIN

To the amazing disciples of the Northwest Synod of Wisconsin,

As I reflect on this past year, one of the most significant moments came at the fall Conference of Bishops, which was held immediately following the installation of our ELCA Presiding Bishop, Yehiel Curry. In his first address to the conference, he talked about a one word focus for his first year, *connection*. As soon as he said it, I was already engaged, especially since that has been one of my goals in my first year!

As I tour this great synod of ours, I've already been to over 50 churches representing over 60 congregations. It helps a lot when I can experience a worship opportunity where multiple churches come together, as was the case Menomonie and Eau Claire! Needless to say, I enjoy learning about the history and more importantly, the people that each congregation has to offer. So distinctive, yet at the same time, we are all still a part of the same team, connected by our common faith and common mission to love our neighbors.

Speaking of our neighbors, I have made it a priority to lift up the important ministry of Neighbor to Neighbor, staffed by Deacon Lidix Montoya and supported by a newly appointed board at last year's synod assembly. It was at that same assembly where we adopted a resolution to raise \$175,000 over three years to support this ministry that is already making great strides in supporting the Latino community throughout our synod. I would invite you personally to contribute toward this goal and/or increase what your church contributes to this ministry on an ongoing basis. Neighbor to Neighbor is a ministry that is so critical right now as so many of our Latino friends live in constant fear of deportation, which can inhibit their ability to even worship in public! We have a tremendous opportunity to show them that they are loved and valued, so let's come together for this important purpose.

Another highlight of 2025 was attending my first ever Churchwide Assembly in Phoenix. In addition to electing the first black Churchwide Secretary (CeeCee Mills) and Presiding Bishop (Yehiel Curry), we also passed yet another social statement, *Faith and Civic Life*. The rostered leaders of the synod will be spending some time digesting it at our upcoming Winter Theological Event in hopes to equip them to lead a study in your church. I would strongly encourage you to participate in this study as it addresses many of our current realities, including the issue of Christian Nationalism. This is a strong movement that is sweeping the country, but remains largely in conflict with our Lutheran beliefs. *Faith and Civic Life* conversations can help us all remain rooted in our faith and help us understand how to be engaged in life beyond worship.

To close, I'd like to thank you for your relationship to the synod. We truly can do more together, staying *connected*. We cannot reach out to the many different groups throughout the synod without your generosity. May we continue to innovate in 2026 as we work collaboratively together and share the love of God throughout our communities!

Privileged to serve,  
Bishop Martin

## A MESSAGE FROM PRESIDING BISHOP YEHIEL CURRY

Dear friends in Christ,

As Lutherans, we are set free to love our neighbors and seek justice. In Colossians 2, we read: “As you therefore have received Christ Jesus the Lord, continue to walk in him, rooted and built up in him and established in the faith, just as you were taught, abounding in thanksgiving” (6-7).

I am abounding in thankfulness for you, church. You are an integral part of this mission as we envision a world experiencing the difference God’s grace and love in Christ make for all people and creation. The ministries of congregations including yours, our synods and the ELCA churchwide organization are all working together today and every day so more people may know the way of Jesus and discover community, justice and love. From providing food to people experiencing hunger, to helping train the next generation of leaders that will lead this church, your support is at work here at home and around the world.

Your generosity to each of the three expressions of the church — your congregation, your synod and the churchwide organization — has made it possible for us to do this work together. Your financial resources, your time volunteering and accompanying others, and your voices are so valued.

As we look ahead to the coming year, I encourage you to continue to walk in Christ, remembering you are rooted and established in faith, and free to love and serve your neighbors. Thank you, church, for the ways you connect with and support our siblings across the ELCA and in our communities.

In Christ,



A handwritten signature in black ink, appearing to read 'Yehiel Curry'.

The Rev. Yehiel Curry  
Presiding Bishop  
Evangelical Lutheran  
Church in America

“As you therefore have received Christ Jesus the Lord, continue to walk in him, rooted and built up in him and established in the faith, just as you were taught, abounding in thanksgiving.”

—Colossians 2:6-7



## **TABLE of CONTENTS:**

Annual Meeting Liturgy	2
Letter from Presiding Bishop Martin	3
A Message from Presiding Bishop Yehiel Curry	4
Table of Contents/Agenda	5
Evangelical Lutheran Church Leadership Directory	6
Minutes from 2023 Annual Meeting	7-8
Pastor's Report	9-12
Staff Reports: Lizzie, Paul, Jessica, Beth	13-16
President's Report	17
Parish Report	18
Baptism and Death Records	19
<b>Committee Reports:</b>	
Building & Grounds	20
Education	21-22
Stewardship, W/ELC, Hatfield	23-28
Confirmation, Youth Group, Campus Ministry	29-31
Witness, Sewing Circle, Outreach	32-33
Worship & Music	34-35
Youth & Family, Technology	36-39
<b>Financial Reports:</b>	
Gifts & Memorials	40-41
Account Summary, 2026 Budget Proposal	42- 43

## **ELC BRF Annual Meeting Agenda –2/1/2026**

Call to Order  
Declaration of Quorum  
Opening Prayer  
Pastor's Remarks  
President's Remarks  
Approval of 2025 Annual Meeting Minutes  
Treasurer's Report  
Committee Reports – Questions from the Congregation  
Presentation of 2026 Budget  
Proposal for Roof/Landscaping Loan Payoff  
Closing Prayer  
Auction of Students for Food Pantry  
Pastor Jenny Pie in the Face Fundraiser Result  
Adjournment

## **Congregational Staff**

Pastor Jennifer Hatleli, Senior Pastor

Elizabeth Lunde, Office Manager

Paul Anderson, Head Custodian

Jessica Bahnub, Education Coordinator

Beth Bue, Youth Ministry Coordinator

## **Congregational Officers**

Peter Bushman, President

Sue Leadholm, Vice President

Barb Olson-Louis, Treasurer

Tasha Koresh, Secretary

## **Music Staff**

Barb Olson-Louis, Organist

Savannah Mahr, Organist

Shauna Boisjoli, Organist

Joey Barnett, Choir Director

## **Church Council Committee Assignments**

Ed Johnson, Building/Grounds

Ann Smetana, Parish Education

Lu Ann Aschenbrenner, Stewardship/WELCA

Patti Whitworth, Witness/Outreach

Tasha Koresh, Witness/Outreach

Sue Leadholm, Worship/Music

Ashley Segelhurst, Youth and Family

Barb Olson- Louis, Gifts/Memorials

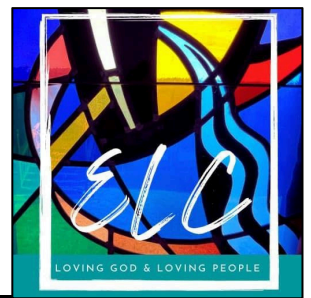
Peter Bushman, Technology



# Evangelical Lutheran Church

115 N Fifth St, Black River Falls, WI 54615

2024 Annual Meeting Minutes per Secretary, Tasha Koresh



ELC Annual Meeting January 26, 2025

Call to Order: 11:05A

Peter: Quorum Check- 36-40 People present

Pastor Report:

- Thank you to all staff and volunteers for a great year.
- 3 Adult Baptisms and 16 total ● We show up when help is needed
- Goals
  - Continuing Education
    - Pastor ■ Staff
    - Leadership
  - Equip more leaders ○ Values
    - Community
    - The next generation

President Report:

- Leadership team: Thank you
- ELC is a special place for everyone
- We are truly amazing
- Goals
  - Lake emersion Baptism

Approval of previous Annual Meeting Minutes: OK no reading

- No Reading
  - Motion Jim ○ Second Al
- Approval of Minutes
  - Motion Barb ○ Second Keith

■ Motion Pass: 11:20

Treasurer Report:

- All our bills are paid
- \$174,000.00 Loan Balance as of 12/31
- Trust Point
  - 121,062.62
- CCU
  - 86,2224.16
- Endowment
  - 209,027.00
- We are ahead on loan payment
  - 3.25% Loan Insurance rate for 10 years
- Motion to approve report
  - Motion: Al ○ Second: Barb Loomis

■ Motion passes: 11:27

Council Members, for another term

- Patti Wittworth
- Ann Smetana
- Sue Leadholm
  - Motion: Ed
  - Second: Joanne

New Council Members

- Ed Johnson
  - Motion: Lori
  - Second: Blaine
- Motion Passes 11:28

Committee Questions:

- Annual Report was amazing
- Lori J: Out of area members visitations
  - Marian-Onalaska
  - Al- Neillsville
  - Monthly Schedules
- Community Open House
  - March 13
    - Committees
    - Resource Fair

2025 Budget:

- Close to the same as 2024
- Jim: Unpaid bills concern
  - No fund transfer required to cover expenses
- Motion to Approve
  - Motion: Al
  - Second: Gwen
- Passes at 11:38A
- No Special Projects for 2025

Treasurer: Motion for Barb to Continue in the Treasurer position

- Motion: Ed
- Second: Dave
  - Motion passes at 11:39

Closing Prayer

Adjourn Meeting:

- Motion: Al
- Second: Keith
  - Motion Passes 11:43





# Rev. Jenny Hatleli

Pastor

Isaiah 43:19: "See, I am doing a new thing! Now it springs up; do you not perceive it?"

## HIGHLIGHTS 2025

- Visiting sister church in Malawi - Migowi
- Adult baptisms in Lake Arbutus
- Accompanied families in grief
- Continued community engagement
- Worship with Ho-Chunk UCC, Little Norway, and Spirit Creek
- 10 baptisms, 11 funerals, 389 Easter, 450 Christmas

## LOOKING INTO 2026

- Continuing Education in the Leading Well Program
- Growing leadership
- Deepening spiritual growth for leaders and congregants
- Continued connection with Malawi - Migowi
- Continued connection with area congregations

## OVERVIEW 2025

As we look back on this past year, I am filled with deep gratitude for God's faithfulness, for the Spirit's movement among us, and for the people who make up this congregation. This has been a year shaped not simply by programs or numbers, but by relationships, courage, generosity, and the steady presence of God in our shared life. Four years as your pastor, and my heart is still so full every time we sing our Gospel Acclamation.

One of the most meaningful experiences this year was our Malawi mission trip, where we were reminded that the church is far bigger than any single building or nation. Through prayer, partnership, and presence, we strengthened bonds with our siblings in Christ and returned home with a renewed sense of global connection and humility.

That same spirit of unity was present closer to home as we shared worship with HoChunk UCC, Little Norway, and Spirit Creek Church as a powerful witness to reconciliation, listening, and the sacred work of building relationships across cultures and histories.





# Rev. Jenny Hatleli

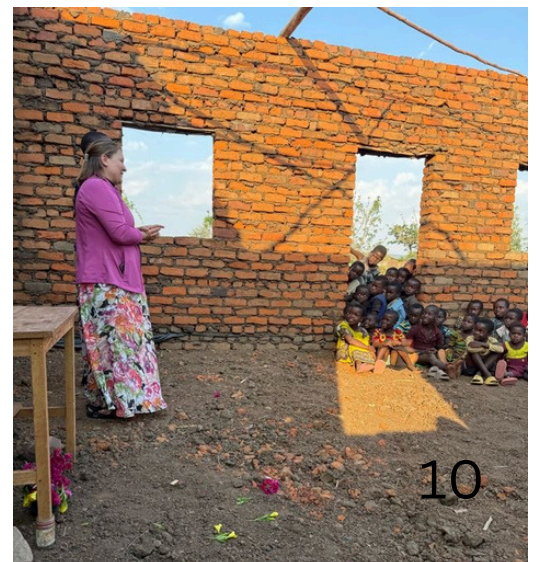
Pastor

**Colossians 2:6-7 “So then, just as you have received Christ Jesus as Lord, continue to live your lives in him, rooted and built up in him, strengthened in the faith as you were taught, and overflowing with thankfulness.”**

Throughout the year, we gathered again and again around Word and Sacrament especially during Easter and Christmas, when our sanctuary was filled with voices, light, and hope. These holy days reminded us that Christ continues to meet us in both celebration and longing. Along the way, we rejoiced in 10 baptisms, welcoming new members into the family of God, and we honored the sacredness of life through 11 funerals, where families and friends gathered to grieve, remember, and cling to the promise of resurrection.

Much of a pastor's work happens quietly, beyond Sunday mornings. This year included countless hospital visits, hospice care moments, homebound communions, and pastoral conversations, often in tender spaces where God's presence was felt deeply. These moments, though unseen by many, are central to our shared ministry and made possible through the faithful support of this congregation.

I am especially thankful for the dedicated leadership team—council members, committees, staff, and volunteers—who lead with wisdom, faith, and trust. As our ministries continue to grow, we have been able to add and support staff, equipping them to serve with creativity and care. With the addition of our Youth Ministry Coordinator position, we have seen an increase in youth participation and involvement in ministry. This has strengthened everything from worship and music to children's ministry and administration. Our faithful saints continue to stand strong in their faith and legacy in our faith community. Dedication in meeting weekly to make quilts with love, study the Bible together, or visit the homebound, God's love has been extended well beyond our walls.







**Acts 2:42–47 “They devoted themselves to the apostles’ teaching and fellowship... and awe came upon everyone.”**

This is where our budget becomes a story of faith—a narrative of God at work through generosity. Because of your financial gifts:



- The lights were on and rooms were warm when children heard about God’s love, maybe for the very first time.
- Program staff were trained, supported, and compensated, enabling them to share the Good News through meaningful experiences like the Children’s Christmas Program.

- Members of the choir gathered in a well-lit, welcoming space, guided by a choir director, to proclaim God’s love through song.

- Travelers and campers gathered for worship—some for the first time in years—and encountered God’s grace in unexpected places.



- Six people were baptized and welcomed into the family of God, supported by the work of pastors, musicians, and office staff. Two of which were baptized in Lake Arbutus for the first time in our church history.

- Families grieving loss were welcomed into a space of warmth and care, where they could hear again the promise of life in Christ.

People of God, our budget covers more than utilities and salaries. It carries our mission into this world. It tells the story of a congregation saying yes—to worship, to care, to justice, to hospitality, and to hope.

As we move into a new year, I am confident that God is not finished with us yet. Thank you for your trust, your generosity, and your willingness to be the church together. It is an honor to serve alongside you.

In 2026 we will be in a season of both holy play, and sacred growth. Get ready for what God will do in your life and in the life of the community as we continue to be Centered in Christ and Sent to Serve, Loving God and Loving People.





One of our sister churches in Migowi



New roof ELC donated to our sister church in Migowi







# Elizabeth Lunde

Office Manager

"She watches over the affairs of her household and does not eat the bread of idleness." -Proverbs 31:27

## HIGHLIGHTS 2025

- Coordinated baptisms, funerals, and weddings with increased efficiency and confidence
- Improved bulletins, newsletters, and PowerPoint slides for clearer, more engaging worship

## OVERVIEW 2025

Throughout this past year, I continued to have the privilege of planning and coordinating a wide range of meaningful church events, including baptisms, funerals, and weddings. With each service and special occasion, my understanding of what is needed behind the scenes has grown, allowing events to run smoothly and with care. I remain deeply grateful to Jean Helland for her continued support during funeral luncheons, as well as to the many dedicated volunteers who step in whenever help is needed. Their willingness to serve makes a tremendous difference.

I also took great pride in maintaining strong communication within our congregation through thoughtfully designed bulletins and newsletters. These publications remain both creative and informative, helping members stay connected and informed about church life while encouraging participation in events and ministries. Over the course of the year, I further strengthened my ability to manage our technical setup during services and special events. I am now fully confident running tech independently, ensuring that worship services are seamless, engaging, and well-supported.

One of my primary goals for this year was to research and potentially transition to a new accounting, membership, and donation management program. While I did not implement a new system, this process helped me realize that such a change is a much larger and more complex project than originally anticipated. There are many programs available, each with strong advantages but also significant drawbacks. At this time, I am comfortable continuing to use Church Windows, which meets our current needs, while continuing to research options that may better serve the church in the future.

I believe I successfully met my goal of revamping our PowerPoint presentations. Slides are now more visually engaging and appealing, helping to maintain attention and enhance the worship experience for all ages, including our younger members. Unfortunately, I was unable to pursue continuing education this year, as the Black River Falls campus did not offer classes that aligned with my professional needs in accounting or media.

Looking ahead to 2026, one of my main goals is to improve and expand our church website. I would like to make it more engaging, informative, and user-friendly so that visitors and members alike can clearly see who we are, what we offer, and all the activities happening within our church community.

In closing, I am truly grateful for the opportunities and experiences of this past year. Serving this congregation continues to be a joy, and I look forward to building on what we have accomplished together as we move into the year ahead.

## LOOKING INTO 2026

- Enhance the church website to be more engaging and informative for members and visitors
- Continue researching church management software while maintaining Church Windows
- Pursue professional development in accounting and media when opportunities become available



**Isaiah 41:10: "So do not fear, for I am with you; do not be dismayed, for I am your God. I will strengthen you and help you; I will uphold you with my righteous right hand".**

## HIGHLIGHTS 2025

- Redefined my role to focus more on Birth to 3 and Sunday School Ministry
- Strong participation in our Youth Christmas Program and Sunday School as a whole
- Birth to 3 experienced increased participation in the fall of 2025 compared to spring

## LOOKING INTO 2026

- Looking at new church systems to improve communication with parents and teachers as well as ensuring more safety of the youth in our care
- Continue to build relationships between parents to help encourage participation
- Hoping to continue growth of the birth to 3 program
- On a personal note, looking forward to continuing this role as a mom of 3!

## OVERVIEW 2025

This year, we welcomed Beth into the ministry team, enabling me to focus on birth-3 and Sunday School ministries and relinquish my role in the middle and high school ministries.

Our primary goal remained the same- helping children know God, feel loved in His church, and begin developing a personal faith. Weekly classes followed a consistent rhythm that balanced music, Bible teachings, and hands on activities. We continued to implement Family Sunday School days to help families connect, share, and build community beyond weekly worship.

Attendance remained relatively steady overall. Like many ministries, we navigated volunteer availability and the ongoing need for clear communication and planning.

Despite any challenges, God consistently provided the people, resources, and encouragement needed to carry out this ministry.





# Paul Anderson

**Custodian**

“Always give yourselves fully to the work of the Lord, because you know that your labor in the Lord is not in vain.”  
- 1 Corinthians 15:58

## HIGHLIGHTS 2025

- Received many compliments from the community on the church grounds.
- Organized and refreshed the Sunday School areas.
- Helped maintain a clean and welcoming church environment.

## LOOKING INTO 2026

- Clean and wax the fellowship hall.
- Continue deep-cleaning projects as time allows.
- Support church meetings and projects as needed

## OVERVIEW 2025

This past year has truly been a wonderful one, and it has been encouraging to hear so many positive comments from members of the community about how beautiful our church grounds look. Knowing that our efforts are noticed and appreciated makes the work even more meaningful. It is a blessing to be part of a church that takes pride in being a welcoming and well-cared-for place for both members and visitors alike.

As time allows this summer, I plan to continue focusing on deep cleaning projects throughout the building to ensure our spaces remain fresh and inviting. Last year, I dedicated time to organizing and refreshing the Sunday School areas, and this year my goal is to clean and wax the fellowship hall. These projects not only help maintain our facilities, but also support the many ministries, gatherings, and events that take place throughout the year.

As our church continues to grow, please feel free to let me know of any meetings, projects, or special needs where extra help may be needed. I am always happy to step in where I can. I look forward to another great year of serving our church family and being part of all that God is doing in our congregation.



# Beth Bue

## Youth Ministry Coordinator

“For I know the plans I have for you,” Declares the Lord, “plans to prosper you and not to harm you, plans to give you a future and a hope.” -Jeremiah 29:11

## HIGHLIGHTS 2025

- Youth participating in Worship as ushers, Communion, readers, and sharing a sermon.
- Youth joining the Sunday School classes to do a Youth Christmas Program
- Youth Group attendance numbers have grown as youth invite peers
- Youth Lock-In
- Bible 365

## LOOKING INTO 2026

- Continue to build relationships with the youth
- Offer the youth a Bible Study
- Promote Summer Bible Camp to the Middle and High School Youth

## OVERVIEW 2025

2025 brought two new “titles” that I am incredibly grateful for as a retired family childcare provider and the ELC Youth Ministry Coordinator. As well as being the Vacation Bible School Coordinator and Sunday School teacher, I am also in a new chapter of my life. From the very beginning, everyone at ELC welcomed me with open arms. The kindness and encouragement I have received have truly meant so much to me and made this transition especially joyful.

With the support of my family and the generosity of donations, the youth room received a wonderful makeover this year. It has become a welcoming space where our youth can gather, connect, and truly call their own. A place where they feel at home, valued, and respected.

Pastor Jenny and I continue to work well together as a team in Confirmation, and it has been such a blessing to see how eager this group of youth is to learn more about the Bible and grow in their faith. In addition to our time together in learning, we were also able to serve both within ELC and out in the community through various service projects, helping our youth put their faith into action.

# PRESIDENT'S REPORT

Dear Church Family:

As we reflect on the past year, I do so with deep gratitude and humility. It has been a year marked by faithfulness, growth, challenge, and hope. Through it all, this congregation has continued to live out its calling—to love God, serve our neighbors, and walk together in faith.

First and foremost, thank you. Thank you for the countless hours of service, the generous sharing of talents, and the faithful stewardship of resources that make our ministry possible. From worship leaders and teachers, to council members, volunteers, musicians, and staff—this congregation is strong because so many are willing to say “yes” when called. You Show up!

Over the past year, we have seen meaningful growth in several areas of our lives together:

- **Worship and Spiritual Life:** Our worship continues to be enriched through music, thoughtful preaching, and the active participation of all ages. Special services and seasonal celebrations reminded us of the beauty and depth of our shared faith.
- **Education and Youth:** We are blessed with a growing number of children and youth involved in Sunday School, confirmation, and other learning opportunities. These young people are not just the future of the church—they are an essential part of our present.
- **Community Engagement and Mission:** Our commitment to serving beyond our walls remains strong. Through outreach programs, partnerships, and mission efforts near and far, we continue to be a visible sign of God’s love in the community.
- **Fellowship and Connection:** Meals, gatherings, small groups, and informal moments of care and conversation have strengthened relationships and reminded us that church is not just something we attend, but a community to which we belong.

We have also faced challenges this year. Like many congregations, we continue to navigate financial pressures, changing needs, and the realities of a rapidly evolving world. These moments require careful discernment, prayer, honest conversation, and trust. While decisions are not always easy—and we do not always get everything right—we remain committed to moving forward together with integrity and faith.

I am especially grateful to the Church Council for their leadership, patience, and dedication. Their willingness to engage difficult questions while keeping our mission and values at the center is a true gift to this congregation.

As we look ahead, I am hopeful. Hopeful because of who we are. Hopeful because of the Spirit’s presence among us. Hopeful because this congregation continues to listen for God’s call and respond with courage and compassion.

May we continue to be a church that welcomes all, serves generously, grows faithfully, and trusts deeply in God’s guidance for the year ahead.

Peace to you.

Peter J. Bushman  
President, BRF ELC

# 2025 PARISH REPORT

## Membership Changes

## Baptized

### Membership as of 1-01-2025

861

### Members Received in 2025

Baptism: Children	8
Baptism: Adult	2
Affirmation of Baptism/Confirmands	6
<u>New Members</u>	<u>5</u>
Total	882

### Members Removed in 2025

Death	11
Transfer to another ELCA congregation	0
Transfer to other Lutheran congregations	4
Transfer to other non-Lutheran congregations	0
Removed by own request	0
Other reason or statistical adjustment/inactivity	16

### Membership as of 1-01-2026 Total

851

## Worship Information

Sunday Services - BRF	52
Nursing Home Services	12
Hatfield Campground Services	15
Lenten/Holy Week Services	9
Advent Vespers	3
Christmas/Thanksgiving	2
Wednesday Evening Services	0
<b>Total Services</b>	<b>93</b>

## Worship Attendance Average

Regular Sunday Services Ave	99
Hatfield Ave.	92
Lenten Services Ave	46
Advent Vespers Ave	30

## Worship Attendance Actual

Ash Wednesday Total	49
Maundy Thursday Total	91
Good Friday Total	75
Easter Sunday Total	389
Thanksgiving Eve Total	0
Christmas Eve Total	455
Christmas Day Total	0
Hatfield Total	2,027
Regular Sunday Total	6,053

**Total Attendance (not incl. Weds.) 9,139**

## Sunday School

3-year old – Grade 5 Students	60
Sunday School Teacher	4
Sunday School Substitute Teachers	3
Sunday School Helpers	6
Confirmation Guides	0

## Confirmation

6th Grade	1
7th Grade	5
8th Grade	3
9th Grade	2
<b>Total</b>	<b>11</b>

## Youth Group

7th Grade	10
8th Grade	4
9th Grade	3
11th Grade	1
<b>Total</b>	<b>18</b>



## 2025 PARISH REPORT



We give thanks to God for the gift of new life. In 2025, the following 8 children and 2 adults became members of God's family through baptism.

<i>Brinley Rush</i>	<i>~ May 4th</i>
<i>Hazel Mattison</i>	<i>~ July 20th</i>
<i>Ivy Ulness</i>	<i>~ August 10th</i>
<i>Elliott Witcraft</i>	<i>~ August 17th</i>
<i>Oaklynn Milnthorpe</i>	<i>~ August 17th</i>
<i>Gabriel Milnthorpe</i>	<i>~ August 17th</i>
<i>Kaleb Milnthorpe</i>	<i>~ August 17th</i>
<i>Chase Milnthorpe</i>	<i>~ August 17th</i>
<i>Elvira Schnur</i>	<i>~ November 23rd</i>
<i>Firenze Valentino</i>	<i>~ December 21st</i>

We also give thanks to God for the promise of eternal life for all who trust in the saving power of Jesus Christ. We mourn the loss of family members and celebrate the victory in Christ for the following saints who have joined the church triumphant in 2025.

<i>Richard Lindow</i>	<i>~ January 20th</i>
<i>Carole Peasley</i>	<i>~ March 11th</i>
<i>Ronald Gilbertson</i>	<i>~ March 29th</i>
<i>Elna Bock</i>	<i>~ May 2nd</i>
<i>Mary Jane Thompson</i>	<i>~ July 2nd</i>
<i>Julie Zillmer</i>	<i>~ July 12th</i>
<i>Barbara Hanson</i>	<i>~ July 23rd</i>
<i>Daniel Berger</i>	<i>~ August 28th</i>
<i>Thomas Harkner</i>	<i>~ September 9th</i>
<i>Kay Paar</i>	<i>~ October 8th</i>
<i>Gary Onstad</i>	<i>~ December 6th</i>

# **Building & Grounds Annual Report for 2025**

Team Members: Paul Anderson, Keith Brown, Wayne (Rolo) Bue, John Louis, Barb Olson-Louis, & Ed Johnson – Team Lead

Mission: We are a committee called to utilize our God-given talents and congregational resources for the buildings and grounds that encourage worship, education, and mission in our congregation, and the property stands as a silent witness to the community of our respect and responsibility to God.

The B&G Team concluded many projects in 2025. Some of the accomplishments were:

- Land scaping
- Furnace replacements and repair
- Air conditioner repair
- TruLock door system
- Carpet in the Chapel
- Power washing the Church exterior
- Replaced emergency lighting batteries
- Conducted a BRF Fire Department building orientation and inspection
- Implemented a preventive maintenance plan

## **Goals for 2026**

- Purchase a dehumidifier for the boiler room
- Remodel the basement-level elevator entrance
- Remodel the basement-level bathrooms
- Repair or replace the fire panel that controls the building alarm system
- Replace the large basement kitchen refrigerator's cooling coil
- Install a gutter over the main church entrance to eliminate ice accumulation

Special thanks to all B&G team members for their active and sustained commitment to the mission and the congregation. A special thank you goes out to Barb and John for the extraordinary commitment and accomplishments over the last 3 years. Both have decided to step away from the B&G committee as we start anew in 2026.

Respectfully submitted,  
Ed Johnson, B&G Team Lead

## ***Education Committee Annual Update 2025***

---

~By Ann Smetana, Education Committee

When one thinks about education, many things can come to mind. Our Education Committee here at ELC has a bit of everything. This committee includes Birth to 3 Ministry, Sunday School, First Communion Classes, Confirmation, Youth Group, Adult Education (many bible/book studies for just about every schedule), God's Work our Hands Sunday, Vacation Bible School, Men's and Women's group recently this year we added Bible 360 where we are trying to read the Bible in a year! This committee definitely keeps the church a buzzin'! God's Work Our Hands celebrated its third year. This year, we returned to Interfaith as our home base for our activities. It was a great day, both inside and out! We had a crew of 40 dedicated volunteers around this year. Some of these people wanted to be outside, so they were at Lunda Park. They got their hands dirty weeding and making the gardens look beautiful, and they also picked up some trash in the park. The inside volunteers were busy with three stations. These stations included making cards for our shut-ins, assembling survival kits for our local public servants (police, firefighters, law enforcement, and courthouse employees), and designing/coloring door hangers for our shut-ins and nursing home residents.

The cards were made by using markers, colored pencils, stencils, etc. Man, they had a fabulous time chit-chatting AND serving God at this station. These people were great multitaskers! Then our survival kit assemblers got into a rhythm and got their groove on, making all 150 kits! They had items like Life Savers, gum, mints, Tootsie Rolls, Snickers, etc. What fun it was not only making these, but also delivering them and seeing the faces of those accepting them. Lastly, our door hangers group had a fabulous time coloring within the lines and choosing creative colors to make the recipients happy and bright!

One of our newer groups this year was the Women's. This group of women gathered a few times to chat and chill with Christ. The first gathering was at Pastor Jenny's, Charcuterie, and Christ. Man, I have never seen sooooo many different charcuterie boards in my life! Yet, in a good way! There were so many boards with a variety of food items, from crackers and cheese to fruit, desserts, and everything one could imagine. Everyone left with a full belly. And we even played a really neat game of get-to-know-you BINGO! Great fellowship fun. The next event was painting with a purpose. The ladies gathered at church and watched a YouTube video of painting on canvas while connecting with one another. Third, we went down to Revolution (after hours) and had some fantastic food (paninis and soup!) and fellowship (board games).

Good thing it was after hours cuz some of us got a little loud (the boardgamers in us came out, we were a...little competitive)! Lastly, hosted by Ashley and the Youth/Family Committee, she arranged some wreath-making! This well-looked-forward-to event did not disappoint. Ladies gathered at church, made some special holiday decorations, and didn't have little ones underfoot, so they had some "me" and "adult time!" Go ladies!

Wherever one or two are gathered in my name, I am there! And man, did Jesus show up in many forms this year in our Education Committee activities! Thanks again for participating and showing up for Christ!

## ***Adult Education & Bible Study Update***

~By Paul Rykken

Our adult study programs continue to grow as we draw as many people as possible into God's Word and create innovative, accessible ways for our community to engage Scripture. Through digital ministry, shared reading plans, and in-person study, we help our community carry Christ's hope into the world. Here are three of our recent initiatives:

### **Book Study: The Cost of Discipleship by Dietrich Bonhoeffer**

In February of 2025, we explored the life of Dietrich Bonhoeffer, including his classic book, *The Cost of Discipleship*. Roughly coinciding with the November 2024 release of *Bonhoeffer* (the movie), 20-25 of our members took on this challenge, and it prompted great discussions about the role of Christians in contemporary society.

### **Two Worlds: A Digital Ministry Experiment**

Our lectionary blog, *Two Worlds*, began in February 2023 as an outgrowth of a Bible study we were conducting at the time. It became our first experiment in digital ministry in this format, offering a weekly reflection on the Revised Common Lectionary readings for the upcoming Sunday.

The title *Two Worlds* reflects a truth Augustine understood well: Christians live in the tension between the world we see and the world God promises. We navigate daily responsibilities, relationships, and challenges, yet our deepest identity belongs to a kingdom still unfolding. This tension shapes how we read Scripture and how we live. The blog seeks to accompany readers in that space—where faith meets complexity, and where God's promises illuminate our everyday lives. Paul Rykken authors the blog in consultation with Pastor Jen.

### **Bible 365: A Shared Journey Through Scripture**

Alongside the blog, many in our congregation have embraced a second initiative: the Bible 365 Challenge. More than 60 members are participating in this one-year reading plan, journeying together through the entire Bible. This shared discipline has created a sense of community, accountability, and discovery as we move through the narrative of Scripture. This will run through September of 2026.

## ***Vacation Bible School Annual Report - 2025***

~By Beth Bue

### Community-Wide Vacation Bible School highlights for 2025:

SCUBA Community Wide Vacation Bible School was held at ELC August 4th – 7th. A meal was served from 5:15 p.m. – 5:45 p.m., with VBS starting at 6:00 p.m. VBS ended at 7:45 p.m. VBS is open to children ages 3 years going into 5th grade.

43 ELC families, 8 families with no church affiliation, 1 United Methodist Family, 1 family Alma Center Lutheran Church, and 1 family Bridge Church. Average 70 people ate each night.

54 children registered, average attendance was 47. Online registration vs paper registration went well. Spirit Creek and Little Norway churches joined the ELC VBS Team. 16 adult volunteers and 8 youth volunteers helped at VBS. A program was held on Thursday night, during which the children shared the songs they learned and enjoyed ice cream sundaes with their families.

VBS goals for 2026 is to offer community outreach to reach new families, offering the parents an evening out to eat and have fellowship together, and choose a service project for the families to bring items in to donate. Continue our focus on spiritual growth, volunteer development, and, above all, keeping it fun and exciting as they learn about God!



## STEWARDSHIP ANNUAL REPORT

The 2025 Stewardship Committee includes Joy Fossum (chair), Pastor Jenny Hateli, Chad Bahnub, Ed Johnson, and Lu Ann Aschenbrenner.

### 2025 HIGHLIGHTS

- Volunteers cleaned a home to prepare it for a family experiencing homelessness.
- Filled boxes with supplies for Veterans, the food pantry, and baby shower gifts for those in need.
- Volunteers stocked Blessing Boxes weekly.
- Made and shipped 400 quilts.
- Volunteers supplied, packed, and shipped support kits for:
  - o 40 Personal Care
  - o 100 School
  - o 60 Baby Care
- Open house for ELC and other community support programs.
- Malawi Fun Fair—raised awareness and support for our sister church in Malawi.
- Volunteers cooked and delivered, on average, 126 meals each week for Mighty Table.

The countless hours this congregation has devoted to ministries and acts of service are immeasurable—a true and heartfelt offering to God.

How often have you heard Pastor Jenny say these words? “Here at Evangelical Lutheran Church (ELC), we try our best to be centered in Christ and sent to serve. We try to live this out by **loving God and loving people.**” The Stewardship Committee hopes you recognize the many ways you showed love to one another and our community. All the generous gifts of time, talent, and treasure—through prayer, service, and giving—made incredible things possible. Your generosity has transformed lives, renewed hope, and propelled our church forward in meaningful ways. Thank you for every prayer, gift, and act of service. Thank you for supporting Red Envelope Ministries—an essential part of our church’s mission of stewardship and outreach.

This year’s total for the ministries:

- Bed Nets: \$2,078
- Bible Camp: \$3,316
- Interfaith: \$1,011
- Missionary for a Day: \$1,266
- Radio Ministry: \$5,169

The Stewardship committee thanks all who support our church, whether through a pledge or through faithful weekly giving—all are gifts and all are important. Results of the Stewardship Drive:

- Pledges received: 83 (\$213,914 in total)
- People/families giving online: 100
- People/families using the envelopes: 126

Looking ahead to 2026, the Stewardship Committee (at the direction of the congregation at the annual meeting) will develop and implement a plan to help secure funding to cover the \$75,000 shortfall for the new sidewalk project. God has blessed our church, allowing us to be a blessing to others. Your generosity helps us to reach people locally and globally in Jesus’ name.

*“God has given gifts to each of you from His great variety of spiritual gifts. Manage them well so that God’s generosity can flow through you.”*

1 Peter 4:10

## 2025 W/ELC President's Report

Mission Statement: to mobilize women to act boldly on our faith in Jesus Christ

The Women of Evangelical Lutheran Church were very active in 2025 with a variety of events, fellowship and service.

We meet on the second Wednesday at noon in the months of January-May and again from September-December for lunch and either a guest speaker or a creative activity. We made Valentines for Veterans, had presentations from Beth Bue regarding her Monarch butterfly project, Darren Durman with information on the Jackson County Historical Society, flower arranging led by Pastor Jenny, and a Christmas party in December, to name a few activities. We are open to ideas for our 2026 calendar

We decorated and helped with the Malawi fund raiser for the mission trip and provided lunch in September for the fall meeting of God's Work, Our Hands. Lenten and Advent services were followed by our soup and sandwich meals. We hosted a brunch in November in honor of Veterans, serving approximately 75 people in house plus multiple carry outs. This is an annual activity in lieu of a fall harvest dinner. Thank you to everyone who provided food, helped serve, set up and clean up for these events. It was great to have such enthusiastic responses to the sign-up sheets and have so many attendees.

Our major fundraiser is our No Bake Bake Sale in May. Funds collected are used for many purposes, such as sponsoring radio broadcasts, world hunger donation, \$500.00 annually to Friends Sharing Food, Project Comfort (Lutheran World Relief shipping costs) and Katie's Fund (National ELC scholarships for women). We provide bibles for infants, pre-school, 3<sup>rd</sup> grade, and confirmation students. We facilitated the collection, assembly and packing of Lutheran World Relief backpacks filled with school supplies, personal care kits, baby care kits and quilts (see Betty Steele's sewing circle report).

Thank you so much to the women – and men – who have given so much of their time, talents, food and monetary donations to support our programs throughout the year. I am proud serve as president of this wonderful group and look forward to a busy 2026.

Respectfully submitted,  
Sonia Hicks, WELC President

# 2025 WELCA President's Annual Report

## Women of Evangelical Lutheran Church - 2025 Consolidated Income Statement and Budget

Income	Year to Date	2025 Budget	Difference	2026 Budget
<b>Fundraising</b>				
BookNook/Fair Trade	76.00	900.00	-824.00	900.00
Church Brunch	370.16	350.00	20.16	350.00
No Bake - Bake Sale	3,920.00	3,800.00	120.00	3,900.00
Quilt Sales	725.00	500.00	225.00	500.00
Soup and Sandwich Suppers	831.03	500.00	331.03	500.00
Other	0.00	0.00	0.00	0.00
<b>Donor Restricted</b>				
Altar Guild	0.00	900.00	-900.00	900.00
Library	0.00	50.00	-50.00	50.00
LWR - kit purchases	100.00	450.00	-350.00	450.00
LWR - shipping	75.55	200.00	-124.45	200.00
Prayer Shawls	0.00	0.00	0.00	0.00
Baptismal Shawls	0.00	0.00	0.00	0.00
Sewing Circle	1,433.91	1,500.00	-66.09	1,500.00
Thank offering	12.00	200.00	-188.00	200.00
W-ELC Worship Offerings	0.00	200.00	-200.00	200.00
World Hunger	0.00	0.00	0.00	0.00
<b>Unrestricted Contributions/Other</b>				
Funeral Services	400.00	0.00	400.00	0.00
Interest income	132.88	25.00	107.88	40.00
Memorials	50.00	0.00	50.00	0.00
Miscellaneous/Other	981.74	0.00	981.74	0.00
CashIn/Out	58.00	0.00	58.00	0.00
<b>Fund Transfers in</b>	2,379.02	0.00	2,379.02	0.00
<b>Total Income</b>	11,545.29	9,575.00	1,970.29	9,690.00

## Women of Evangelical Lutheran Church - 2025 Consolidated Income Statement and 2026 Budget

Expenses		Year to Date	2025 Budget	Difference	2026 Budget
<b>Congregational Support</b>					
Altar guild		0.00	900.00	-900.00	900.00
Gifts		0.00	350.00	-350.00	350.00
Home Missions/Visitations		0.00	0.00	0.00	0.00
Prayer Shawl		0.00	100.00	-100.00	100.00
Baptismal Shawl		0.00	50.00	-50.00	50.00
Radio Broadcast		0.00	500.00	-500.00	500.00
Sunshine Postage & Cards		156.00	250.00	-94.00	250.00
Camperships		0.00	2,000.00	-2,000.00	2,000.00
Missions		0.00	600.00	-600.00	600.00
Peer Ministry Scholarship		0.00	0.00	0.00	0.00
<b>Benevolence</b>					
Community Outreach		0.00	0.00	0.00	0.00
Food Pantries		500.00	500.00	0.00	500.00
Sugar Creek		200.00	200.00	0.00	200.00
Luther Park		300.00	300.00	0.00	300.00
LWR - Purchases		222.45	700.00	-477.55	700.00
LWR - Shipping		350.00	350.00	0.00	350.00
Migowi Projects		0.00	0.00	0.00	0.00
Sewing Circle		2,213.47	4,000.00	-1,786.53	4,000.00
World Hunger		200.00	200.00	0.00	200.00
Thankoffering		200.00	200.00	0.00	200.00
Katie's Fund		75.00	75.00	0.00	75.00
SWO Expense/Offering		0.00	30.00	-30.00	30.00
Triennial Gift/Offering		0.00	50.00	-50.00	50.00
W-ELCA Worship Offering		500.00	500.00	0.00	500.00
<b>Education, Program &amp; Events</b>					
Bible study		0.00	250.00	-250.00	250.00
Library Expense		0.00	200.00	-200.00	200.00
Program Speakers		100.00	500.00	-400.00	500.00
Registration Fees		0.00	160.00	-160.00	160.00
Senior High Youth/Triennial		0.00	0.00	0.00	0.00
SWO Lodging & Travel		0.00	0.00	0.00	0.00
Sunday School Bibles		1,013.95	800.00	213.95	800.00
Triennial Convent.		0.00	0.00	0.00	0.00
<b>Fundraising</b>					
Book Nook/Fair Trade		0.00	850.00	-850.00	850.00
Harvest Dinner		0.00	0.00	0.00	0.00
No-Bake Bake Sale		313.04	300.00	13.04	300.00
Church Brunch		0.00	100.00	-100.00	100.00
Other		0.00	0.00	0.00	0.00
<b>Operating</b>					
ELC Furnishings		0.00	0.00	0.00	0.00
Kitchen Food/Supplies		0.00	0.00	0.00	0.00
Mileage - Dairyland Activities		0.00	0.00	0.00	0.00
Office expense		0.00	600.00	-600.00	600.00
Miscellaneous		548.09	100.00	448.09	100.00
Cash In/Out		48.67	0.00	48.67	0.00
<b>Fund Transfers Out</b>					
		1,599.46	0.00	1,599.46	0.00
<b>Total Expenses</b>		<b>8,540.13</b>	<b>15,715.00</b>	<b>-7,174.87</b>	<b>15,715.00</b>
<b>Net Income (loss)</b>		<b>3,005.16</b>	<b>-6,140.00</b>	<b>9,145.16</b>	<b>-6,025.00</b>



**Assets**

Co-op Credit Union Checking	8,740.96	
Co-op Credit Union Savings	1,961.80	
Co-op Credit Union CD #1	1,536.34	
Co-op Credit Union CD #2	1,490.37	
Jackson County Bank - Altar Guild Fund	739.39	
Cash On Hand	0.00	
<b>Total Assets</b>	<b>14,468.86</b>	

**Liabilities**

General Fund		
Accts payable	0.00	
Designated Funds		
Accts payable	0.00	
Donor Restricted Funds		
Accts payable	0.00	
<b>Total Liabilities</b>	<b>0.00</b>	

**Fund Balances**

General Fund	12,722.56	
Cash On Hand	0.00	
<b>TOTAL GENERAL FUND</b>		12,722.56
Designated Funds		
Triennial W/ELCA Convention	130.00	
Triennial Youth Convention	0.00	
Furnishings -	0.00	
<b>TOTAL DESIGNATED FUNDS</b>		130.00
Donor Restricted Funds		
Altar Guild	739.39	
Bible Study Resources	0.00	
Food Pantries	0.00	
Home Missions	0.00	
Library	0.00	
LWR - kit purchases	0.00	
LWR - shipping	0.00	
Prayer Shawls	507.00	
Baptismal Shawls	64.47	
Sewing Circle	305.44	
Thankoffering	0.00	
W-ELC Worship Offerings	0.00	
World Hunger	0.00	
<b>TOTAL DONOR RESTRICTED FUNDS</b>		1,616.30
<b>Total Fund Balances</b>	<b>14,468.86</b>	
<b>Total Liabilities &amp; Fund Balances</b>	<b>14,468.86</b>	

## HATFIELD WORSHIP 2025

by Barb Olson-Louis, Hatfield Worship Coordinator

It was another fantastic summer of worship and fellowship at Lake Arbutus! Like me, I know so many people look forward to these outdoor services, hearing the word, and taking in the beauty of God's Creation! As this service doesn't just magically happen, there are so many people to thank! Through 15 weeks of worship, we had 8 people take on Lay Leadership duties – Thank You! We had 14 wonderful families and groups provide treats for coffee fellowship – Thank You! The ELC house band, River's Grace rocked the park on 3 occasions, and the vocal group Grace Notes shared their musical talents during a wonderful combined service with Calvary Lutheran from Neillsville – Thank You! We held special events on Sundays, including a "Blessing of the Pets" service (always so fun!) and a "Baptism Splash"

—  
where we celebrated all the newly baptized and reflected on what it means to be a baptized Child of God. Pastor Jenny did double duty, preaching in BRF, then zooming out to Hatfield for a repeat and sharing the "pulpit with Pastor Chad Anderson from Neillsville on August 17 – Thank You! And, last but not least, John Louis transported, set up, took down, and packed up all the equipment for the entire 15 weeks – Thank You! The final summer worship was celebrated with an old-fashioned Pie & Ice Cream Social - Thanks to all who donated the delicious pies and to all who helped serve! It's been such a hit, we're going to keep doing it! This Outreach Ministry has grown beyond what we ever imagined it would be when we started this as an experiment back in the 70's. As a wrap-up, I'd like to share some interesting statistics on the Hatfield 2025 worship experience. The average temperature was 72°, with a low of 55° and a high of 90°. We had 6 baptisms (including 2 in the lake!), and the pavilion was used by families an additional 7 times after worship. The average weekly attendance (by people!) was 95, with a low of 55 and a high of well over 200! We saw several Sundays with over 100 people in attendance! And throughout the summer, we made lots of new canine friends! The average weekly dog attendance was 7, with one Sunday welcoming 20 dogs and 1 adorable kitty! (And a bunny even hopped into worship one Sunday – I think by accident!) All God's creatures have a place in the choir! Again, thank you to all who make this service possible! Planning has already begun for a fantastic run of 16 weeks in 2026 – so, we'll see you at the lake!



## **Confirmation Annual Report 2025**

### **Beth Bue and Pastor Jenny Hatleli**

Mission statement: Help youth to become lifelong disciples who are committed to loving God and people, building a supportive community, and being sent out to serve the world in Christ's name.

Confirmation Programming highlights for 2025:

- Weekly classes on Sundays from 11:00 a.m. to 12:30 p.m.
- Youth volunteered in Sunday School.
- Youth assist in Worship as ushers, greeters, acolytes, and help with Communion.
- January 2025 service project was helping the Quilting Club design quilts
- February 2025 the youth created Valentine cards and delivered them to Meadowbrook residents.
- February 2025 the youth collected items for the Blessing Boxes and also filled the boxes.
- Attended Middle School Youth Gathering in April 2025, helped make Blessing Bags for the homeless, and participated in various break-out sessions.
- April 2025 "Egged Houses": youth filled plastic Easter eggs with candy and small toys and distributed them to Sunday School families' houses, with a note taped to the door explaining what "egging" is.
- 6 youth were confirmed on April 27, 2025
- In August 2025, the youth volunteered at Community Vacation Bible School
- Youth created various crafts and cards for the Visitation Team to give to the people they visit.
- Trunk or Treat Community Event was held on October 31, with around 1,000 trick-or-treaters and 20 trunk hosts. Hot chocolate and apple cider were served to people. Around 780 people were served from the BP Smokehouse food truck at the Mackenzie family's house. Confirmation students helped at the event by handing out candy or "runners" of candy.
- November and December 2025 the youth helped host a Community Food Drive for the local food pantry. Their first goal of 150 items was met, so they had a New Year's Eve Lock-In, 12 youth and 3 adults attended. They also surpassed their 2<sup>nd</sup> goal of 300 items, which they get to "pie" Pastor Jenny at the Annual Meeting. Total items collected were 501! Items were taken to the local food pantry to be distributed to families.
- 3 youth participated in Advent Worship by giving the message
- Youth and their families participated in the BRF Christkindl parade to let the community know about the Live Nativity ELC was hosting.
- December 2025, the youth decorated the outside of Meadowbrook for Christmas and went to Pine View Terrace to do some Christmas caroling in the dining room.
- Live Nativity was held on December 10 from 6:30 p.m. to 8:00 p.m. Hot chocolate and cookies were served to those in attendance. Around 40 people attended this year, and they experienced live animals brought in by the Lindow and Woods family. 8 youth portrayed Biblical people such as shepherds, Mary, Joseph, and wise people.
- Youth joined the Sunday School classes to do a Christmas Program.

#### **Confirmation goals for 2026 are:**

- Continue to learn God's story through the Old and New Testaments and share His word.
- Continue to learn the basics of Christian faith and Lutheran theology.
- Deepen their faith and develop a personal relationship with Jesus, leading to the affirmation of their baptism.
- Continue to see how Jesus is in our daily lives.
- Continue being involved in Worship by being an acolyte, a reader, serving Communion, music, etc.
- Continue doing Outreach within the church and community.

# **ELC Youth Group Annual Report 2025**

## **Beth Bue**

Mission statement: Each person is uniquely loved and created by God, focus on loving God and loving people. To offer a “safe space” for questions and building peer relationships.

### **ELC Youth Group Programming highlights for 2025:**

- Beth Bue hired as Youth Ministry Coordinator in September 2025
- Youth Group began October 2025
- Weekly Wednesdays from 5:45 p.m. to 7:00 p.m. with a light meal served. Light meals are donated by members of the church.
- Average attendance 12 to 16 youth, 6th grade through 12th grade
- Youth volunteers in Sunday School
- Youth created various crafts and cards for the Visitation Team to give to the people they visit.
- Trunk or Treat Community Event was held on October 31, with around 1,000 trick-or-treaters and 20 trunk hosts. Hot chocolate and apple cider were served to people. Around 780 people were served from the BP Smokehouse food truck at the Mackenzie family’s house. Confirmation students helped at the event by handing out candy or “runners” of candy.
- November and December 2025, the youth helped host a Community Food Drive for the local food pantry. Their first goal of 150 items was met, so they had a New Year’s Eve Lock-In, 12 youth and 3 adults attended. They also surpassed their 2nd goal of 300 items, which they get to “pie” Pastor Jenny at the Annual Meeting. Total items collected were 501! Items were taken to the local food pantry to be distributed to families.
- 3 youth participated in Advent Worship by giving the message
- Youth and their families participated in the BRF Christkindl parade to let the community know about the Live Nativity ELC was hosting.
- Live Nativity was held on December 10 from 6:30 p.m. to 8:00 p.m. Hot chocolate and cookies were served to those in attendance. Around 40 people attended this year, they experienced live animals brought in by the Lindow and Woods family. 8 youth portrayed Biblical people such as shepherds, Mary, Joseph, and wise people.

### **The Youth Group’s goals for 2026 are:**

- Inviting friends/peers to Youth Group as well as Worship
- Building Peer Relationships
- Create small groups for Bible Study
- Continue making cards/crafts for ELC Visitation Team
- Participating in Worship

The youth would like to thank everyone who helped create a room for them to learn, socialize, and hang out!

## CAMPUS MINISTRY ANNUAL REPORT FOR CONGREGATIONS DECEMBER 2025



Contact us:

UW-Eau Claire  
Rev. Lori Ruge-Jones  
University Lutheran Church  
110 Garfield Ave.  
Eau Claire, WI 54701  
[pastor@universitylutheran.org](mailto:pastor@universitylutheran.org)

UW-River Falls  
Rev. Ben McWhorter-Rush  
143 E. Cascade Ave.  
River Falls, WI 54022  
[ben@journeyhousecampusministry.org](mailto:ben@journeyhousecampusministry.org)

---

UW-Stout  
Sara McCullough, director  
710 2nd St. E.  
Menomonie, WI 54751  
[lcmstoutdirector@gmail.com](mailto:lcmstoutdirector@gmail.com)

---

Dear friends of the Northwest Synod of Wisconsin, Campus ministry is an extension of your ministry, where students find a “church home away from home.” while they are apart from the faith communities that raised them. Like congregations, we have worship, Bible studies, service projects, and fellowship activities. We gather for meals (very important for college students, among whom food insecurity is higher than the national average). We pray together. We celebrate things like getting into an academic program, studying abroad, starting an internship, and graduation together. We offer comfort and support through roommate conflicts, family struggles, identity crises, and the death of pets or grandparents. As the body of Christ, coming from a variety of ecumenical traditions, we share our faith in Jesus as we learn together what it means to be baptized and sent out into the world to embody God’s love for one another. So much is new when a student moves to college. Campus ministry is one thing that can be consistent between home and school. The people and activities will be different, sure, but the solid theology and home church traditions will feel familiar. Please help the students in your life find Campus Ministry when they go to university, and support them as they continue to grow in their relationship with Jesus and sense of call as a child of God. Campus ministries depend on congregational support in prayer, attendance, connecting us with students, and financial donations. THANK YOU for all the ways your congregation has been present for campus ministry this year!

Peace++

Ben McWhorter-Rush,

Sara McCullough,

and Lori Ruge-Jones,

NWSWI campus ministry staff



## Witness Mighty Table

*Mighty Table originated from dropping off our leftover Advent soup and sandwiches to some foster families and identifying a need in our community.*

We serve foster families, the homeless, and anyone in need. We have provided **5,218** meals to these families in 2025. The total meals to date since we started is **17,855**. We continue to thrive through community grants from the Jackson County Area Foundation and the Tim and Kay Finch Foundation Inc., in addition to many generous individual monetary and food donations.

Thank you for your support!

We are blessed to have such an unbelievable group of volunteers. **You are awesome!** We can't do it without you. We continue to partner with the Foster Closet, Interfaith, and other groups in our community. Thank you! We have been blessed to be the hands and feet of Christ.

Respectfully submitted, Patti Whitworth



## Sewing Circle 2025

Kits and Quilts

by Betty Steele and Joy Fossum.

The 2025 goals were met, and a big thank you to congregation members for helping with this mission.

Following is a breakdown by numbers:

- 40 personal care kits
- 100 school kits
- 60 baby care kits
- 150 Lutheran World Relief quilts
- 150 Project Christmas quilts
- 72 Hospice quilts

Also: "Fidget" hand muffs and "Doggy Bone" knee protectors for Hospice.

Quilts are shared with area organizations' fundraisers, graduating seniors, Sugar Creek and Luther Park Bible camp, and other needs as made known.

A few quilts are made available for sale.

These mission projects continue throughout the year, with each kit highlighted in different months. The Lutheran World Relief Kits and Quilts are delivered in October to Minneapolis Headquarters to be packed for distribution. Making Lutheran World Relief Kits and Quilts is a simple and tangible way to offer comfort and express our love to our neighbors.

Project Christmas quilts are delivered in December.



# Tasha Koresh

Witness/Outreach

*Let your light so shine before men, that they may see your good works and glorify your Father in heaven. Matthew 5:16*

Witness - Outreach 2025 As I look back at the last year, we have helped out the local community in many ways. January 2025, we participated in Community Connect, providing shower kits and toiletries to those facing homelessness or housing insecurities.

Shower Kits- Towel, Shampoo, Body Wash, Deodorant, Toothpaste, and Toothbrush

Full Size Toiletries- Shampoo, Body Wash, Bar Soap, Toothpaste

In July 2025, we participated in Community Connect and provided shower kits and toiletries.

However, in an effort to fill a gap we also provided food kits.

Food Kits- Soup or Chef Boyardee, Oatmeal, Granola Bar, Cookies, Poptarts, Apple Sauce, Fruit Snack, and a water bottle.

What is Community Connect and Why is it important?

Community Connect is a resource fair for anyone who is looking for community resources. This is done the day after the Point in Time Count of the unsheltered in Jackson County. This gets those who are unhoused out of the cold or heat for a few hours, gets them a warm meal, and puts them in touch with those who can help.

o Some Vendors

- ELC
- BRF School District
- Children's of WI
- Jackson County Human Services
- VA
- Western Tech
- Jackson County Bobcat Team
- Free Hair Cuts
- Bridging Bright Smiles
- Black River Health provides a sack lunch
- UMC provides a place to have the resource fair

Jackson County has a Homeless Coalition that meets once a month.

Summer 2025, Animal Shelter Drive- We collected several items for the Jackson County Shelter. We collected anything from food to dog kennels. They were very thankful for all the community support they received.

In Fall 2025, we did a drive for the Jackson County Veterans' Office. We collected several items, from clothing to toiletries to hand warmers. Hunter with the Jackson County Veterans' Office was pleasantly surprised at everything we were able to collect in a month.

What I really want to say is THANK YOU. I might be able to organize and get items where they need to go, but I can't do any of it without our church's support. THANK YOU!!

## **ELC Worship and Music Committee Annual Report**

- 2025 Team members: Sue Leadholm - Chair, Barb Olson-Louis, Joey Barnett, Beth Bue, and Pastor Jenny Hatleli

Mission statement: We are a committee called to use our talents for the enrichment of worship in our congregation and community. Additionally, we would like to equip our congregation with a spiritual rejuvenation each worship and then encourage and support our members to actively participate in prayer, bible study, and acts of service.

This past year, we celebrated an increase in attendance as more and more families see ELC as an energizing and comforting place to hear the word of God. We still provide a live-streamed option on our web page and YouTube account, as well as digitally record and broadcast our service on WWIS. Our Hatfield Outreach services began in May and continued throughout the summer with strong attendance.

Our website continues to be a work in progress, but we hope to encourage our membership to use the resources provided there. Our website is another opportunity for those who are “shopping” for a spiritual connection to learn all that we are about. It is great to see ELC reaching out to others who may not feel connected to a specific faith community.

Many church members state that “Worship is the primary factor in the morale of a congregation”. Four areas in which our church should provide strong support:

- a. Hymns that are engaging
- b. Inspirational worship messages
- c. Strong communication
- d. Warm hospitality

### Worship and Music Programming highlights for 2025:

- Diverse preaching series by Pastor Jenny
- Numerous guest messages: Bishop Martin Halom, Youth speakers - Advent, Deacon Laura Ramlow, Peter Bushman, Ann Smetana, Paul Rykken, Luther Park Executive Director Eric Klein
- Trunk or Treat Community Event was held October 31 with around 1,000 trick or treaters and 20 trunk hosts. Hot chocolate and apple cider were served to people. Around 780 people were served from the BP Smokehouse food truck at the Mackenzie family's house.
- Continued increase in participation of youth during services

- ELC Band “River’s Grace” and ELC Choir have showered us with beautiful music. Pop-up bell choir played. Sunday School singing.
- Worship at Pineview and Meadow Brook monthly
- Hatfield summer worship services ([see separate summary](#))
- Live Nativity was held December 10 from 6:30 p.m. to 8:00 p.m. Hot chocolate and cookies were served to those in attendance. Around 40 people attended this year, they experienced live animals brought in by the Lindow and Woods family. 8 youth portrayed Biblical people such as shepherds, Mary, Joseph, and wise people.
- Special Event Services: God’s Work/Our Hands, Octogenarian Celebration, Mother’s Day, Graduating Seniors, Father’s Day, Grandparent’s Day, Blessing of Staff and Backpacks, combined worship with Ho-Chunk UCC, Little Norway, and Spirit Creek, combined worship with Calvary Lutheran, Pastor Appreciation Day, Blessing of the Pets, All Saints Day recognition, Holy Week, Easter, Advent, and Christmas Eve worship services.

The Worship and Music Committee's goal for 2026 is to encourage MORE participation by ALL members in our church services. Instead of the idea of 'sitting and getting', we hope to promote active movement (traditional communion), heartfelt compassion (greeting and talking with others at coffee hour), and involved leadership (volunteering for weekly worship tasks).

We can only continue to build enriching worship experiences and community activities with YOUR HELP.

The committee would like to express our appreciation for groups and individuals who have given their time and financial gifts to assist with this work.

Special commendation goes to: Pastor Jenny Hatleli; Barb Olson-Louis and Savannah Markee, organists; Joey Barnett, choir director; ushers and scripture readers, lay leaders, music leaders, and coffee hosts; Paul Anderson, custodian; Lizzie Lunde, office administrator; John Louis, Matt Hatleli, Paul Rykken, and Peter Bushman, technology team; Beth Bue, encouraging youth to participate in service/providing creative programs to keep us engaged; Joy Fossum and Cindy Moore, Bible study outreach and ALL who continue to share their time and talents.

Respectfully Submitted,  
Sue Leadholm, Worship and Music Committee Chair

## Youth & Family Ministry

---

*By Ashley Segelhurst*

**Bible Camps:** In 2025, our church sent over a dozen children to Sugar Creek and Luther Park Bible Camps! We continue to be incredibly grateful to all congregation members who contribute to the special offering Bible Scholarships fund – all of these children had their registration fees for camp paid from this fund. Eric from Luther Park also came to ELC to share information about Bible Camp and how it impacts children who attend. We continue to pray that the youth in our congregation are able to experience Bible camp and grow in their relationship with Jesus!

**Encouraging relationships between families:** With so many new families attending Sunday school and worship in 2025, we tried to focus on building relationships between both the children and parents. We hosted a parents' pizza night at Rozario's during one VBS night, which had more than 10 parents attend and enjoy dinner and fellowship together. We also hosted a wreath-making night where parents were invited to come and craft handmade wreaths – this event had over 20 in attendance. Please continue to pray over this ministry, that the parents of the youth in our congregation would grow in friendship and fellowship as a community.

**Baptism splash:** This special worship service at Hatfield over the summer was held to honor the youth who received baptism in the past year. After the service, we had a family-style summer picnic of pulled pork sandwiches and enjoyed the beautiful weather together! We hope you can join us on July 26, 2026 for the third annual Baptism Splash worship and lunch!

**Thank you** to all who have volunteered their time to help make these events a success! We pray that God continues to use this ministry to help further our committee's mission: **“To work with and for the ministry and needs of families and youth in this congregation, to enable them to identify with and to participate in the Christian faith, life, and mission.**



## **Annual Report: The Benefits of Our Online Programs**

Dear Church Family, As we reflect on the past year, I want to take a moment to celebrate something that has quietly become one of the most meaningful strengths of our congregation: our online ministry and digital programs. While worship in-person will always be central to who we are, our online presence has expanded the reach of our church beyond our walls and into homes, hospitals, workplaces, and even across states and time zones.

Online ministry is not a replacement for community—it is another doorway into it. This year, we have seen that clearly. We had over 40,860 page touches, resulting in over 912 hours of content being viewed on YouTube. Our Facebook use is larger than this, and of course, our radio broadcast continues to reach a consistent audience.

### **Online Programs Extend Our Mission Beyond Sunday Morning**

Jesus told the disciples, *“Go into all the world and preach the gospel to all creation”* (Mark 16:15). In today’s world, “all the world” includes digital spaces.

Through live-streamed worship, recorded sermons, online devotionals, and social media outreach, the message of Christ now reaches:

- people who travel or work weekends
- members away at college
- homebound individuals
- those exploring faith quietly before attending in-person
- extended family and friends outside our region

Our online ministry has become an outreach tool, allowing the church to be present where people already live and connect.

### **Online Worship Provides Access for the Homebound and Vulnerable**

One of the most powerful benefits of online worship is accessibility. For many in our congregation—especially older members, those with chronic illness, those recovering from surgery, or those without reliable transportation—online worship is not merely convenient; it is essential.

This year, our online programs have helped ensure that no one feels forgotten or excluded. When someone cannot physically attend worship, they can still hear Scripture, sing along, pray, and feel spiritually connected.

This is the church caring for the whole body of Christ.

## **Digital Ministry Helps People Stay Connected During Life's Disruptions**

Life is unpredictable. Families get sick. The weather turns dangerous. Schedules shift. Loved ones move away. Jobs demand travel.

Our online tools provide a stable spiritual anchor in unstable times. We've seen people remain connected—even during stressful seasons—because worship and encouragement were accessible anytime.

Many have shared that a sermon replay, a devotional post, or an online prayer moment became exactly what they needed in the middle of their week.

## **Online Ministry Creates New Entry Points for New People**

One of the most exciting blessings of this year is how many new individuals have connected with our congregation.

Many people today “visit” a church online first. They watch a service, listen to music, explore a website, read a devotional, or follow social media before they ever walk through the doors.

Our online presence:

- removes fear and uncertainty for newcomers
- helps them learn who we are
- gives them a chance to connect at their own pace
- provides a non-intimidating onramp into the community

In many ways, our online ministry has become our new “front porch.”

## **Digital Ministry is a Tool for Sharing Hope**

Ultimately, everything we do online is for one purpose: proclaiming Christ and sharing hope.

The Apostle Paul wrote, *“How can they believe in the one of whom they have not heard?”* (Romans 10:14). Our online ministry allows the Gospel to be heard—again and again—by people who might not otherwise step into a sanctuary. That is mission work.

## Looking Forward

As we move into the coming year, we will continue to invest in online programs—not as technology for technology’s sake, but as ministry for people’s sake.

We will focus on:

- improving live-stream consistency and audio quality
- supporting volunteers who run digital ministry
- increasing online discipleship resources
- strengthening the connection between online viewers and the in-person community
- helping all generations feel included and capable of connecting

## A Word of Gratitude

None of this happens without faithful volunteers and generous supporters. I want to thank:

- the tech and audio-visual team
- those who support the ministry through giving and prayer

You may not always be seen, but the impact of your work is far-reaching. We are living in a time where the Gospel can travel faster and farther than ever before. Our online programs have become a blessing, a bridge, and a bold mission tool for our congregation.

May we continue to use every tool available to share the love of Christ and invite others into His grace.

Peace to you!

Peter Bushman

Tech Team Leader

# GIFTS & MEMORIALS SUMMARY - 2025

GIFTS/MEM. SUPER SHARE	BALANCE 12/31/2024	TOTAL INCOME	TOTAL EXPENSES	BALANCE 12/31/2025
AED Equipment	\$0.00	\$0.00	\$0.00	\$0.00
Altar Guild	\$0.00	\$0.00	\$0.00	\$0.00
Bed Nets	\$2,075.00	\$2,186.47	-\$2,200.00	\$2,061.47
Bible Camps	\$3,198.18	\$3,081.62	-\$5,110.00	\$1,169.80
ELCA World Hunger	\$110.00	\$100.00	-\$120.00	\$90.00
Elevator Repair	\$10,165.55	\$0.00	-\$308.63	\$9,856.92
Foster Closet	\$300.00	\$20.00	-\$300.00	\$20.00
GGB	\$0.00	\$0.00	\$0.00	\$0.00
Hand Bells	\$679.63	\$0.00	\$0.00	\$679.63
Hatfield Sound	\$0.00	\$0.00	\$0.00	\$0.00
Hatfield Worship	\$849.79	\$50.00	-\$849.79	\$50.00
Hearing Assist	\$0.00	\$0.00	\$0.00	\$0.00
Hoagenson Gift	\$0.00	\$0.00	\$0.00	\$0.00
Hymnals/Worship	\$116.34	\$0.00	\$0.00	\$116.34
Interest Earned	\$3,238.89	\$1,458.42	-\$3,000.00	\$1,697.31
Interfaith	\$726.00	\$966.63	-\$726.00	\$966.63
Landscape	\$5,450.60	\$100.00	\$0.00	\$5,550.60
Library	\$0.00	\$0.00	\$0.00	\$0.00
Live Nativity	\$250.00	\$0.00	-\$250.00	\$0.00
LSS	\$0.00	\$0.00	\$0.00	\$0.00
Lutheran World Relief	\$2,032.00	\$2,610.00	-\$2,032.00	\$2,610.00
Mighty Table	\$14,980.94	\$33,386.57	-\$8,822.12	\$39,545.39
Migowi Bldg Fund	\$438.00	\$0.00	\$0.00	\$438.00
Missionary Support	\$165.00	\$1,496.28	-\$1,081.00	\$580.28
Organ Maint.	\$630.00	\$0.00	\$0.00	\$630.00
Peace Pole	\$0.00	\$0.00	\$0.00	\$0.00
Peer Ministry	\$0.00	\$0.00	\$0.00	\$0.00
Radio Fund	\$3,922.46	\$5,194.13	-\$4,764.40	\$4,352.19
Roof	\$59,112.22	\$24,741.57	-\$62,571.16	\$21,282.63
Sewing Circle	\$102.91	\$25.00	-\$102.91	\$25.00
SHP	\$1,563.54	\$0.00	\$0.00	\$1,563.54
Sound System	\$314.64	\$1,000.00	\$0.00	\$1,314.64
Soup Suppers	\$0.00	\$0.00	\$0.00	\$0.00
Sunday School	\$260.53	\$928.30	-\$980.95	\$207.88
Undesignated	\$3,989.88	\$1,408.00	-\$3,815.55	\$1,582.33
VBS	\$357.00	\$850.00	-\$480.97	\$726.03
Vocal Choirs	\$272.70	\$40.00	\$0.00	\$312.70
Youth & Family	\$2,280.12	\$2,318.00	-\$2,625.95	\$1,972.17
Youth Gathering	\$0.00	\$200.00	\$0.00	\$200.00
JC Youth Initiative	\$4,000.00	\$0.00	\$0.00	\$4,000.00
Moving Donation	\$0.00	\$0.00	\$0.00	\$0.00
Lucille Bjerke Gift	\$10,773.00	\$0.00	-\$10,773.00	\$0.00
God's Work Our Hands	\$417.00	\$0.00	\$0.00	\$417.00
WELCA	\$300.00	\$205.65	-\$385.65	\$120.00
Trunk or Treat	\$350.00	\$60.00	-\$350.00	\$60.00
Veterans Drive	\$200.00	\$130.00	\$0.00	\$330.00
Blessing Boxes	\$50.00	\$290.00	\$0.00	\$340.00
Resurrection Garden	\$0.00	\$600.00	-\$600.00	\$0.00
Building Repair	\$0.00	\$1,500.00	-\$1,500.00	\$0.00
Malawi Trip	\$0.00	\$12,023.17	-\$12,013.17	\$10.00
MIF	\$0.00	\$30.00	\$0.00	\$30.00
Food Pantry	\$0.00	\$157.50	\$0.00	\$157.50
Grand Total	\$133,671.92	\$97,157.31	-\$125,763.25	\$105,065.98



AED Equipment	\$0.00
Altar Guild	\$0.00
Bed Nets	\$2,061.47
Bible Camps	\$1,169.80
ELCA World Hunger	\$90.00
Elevator Repair	\$9,856.92
Foster Closet	\$20.00
GGB	\$0.00
Hand Bells	\$679.63
Hatfield Sound	\$0.00
Hatfield Worship	\$50.00
Hearing Assist	\$0.00
Hoagenson Gift	\$0.00
Hymnals/Worship	\$116.34
Interest Earned	\$1,697.31
Interfaith	\$966.63
Landscape	\$5,550.60
Library	\$0.00
Live Nativity	\$0.00
LSS	\$0.00
Lutheran World Relief	\$2,610.00
Mighty Table	\$39,545.39
Migowi Bldg Fund	\$438.00
Missionary Support	\$580.28
Total	\$65,432.37

Organ Maint.	\$630.00
Peace Pole	\$0.00
Peer Ministry	\$0.00
Radio Fund	\$4,352.19
Roof	\$21,282.63
Sewing Circle	\$25.00
SHP	\$1,563.54
Sound System	\$1,314.64
Soup Suppers	\$0.00
Sunday School	\$207.88
Undesignated	\$1,582.33
VBS	\$726.03
Vocal Choirs	\$312.70
Youth & Family	\$1,972.17
Youth Gathering	\$200.00
JC Youth Initiative	\$4,000.00
Moving Donation	\$0.00
Lucille Bjerke Gift	\$0.00
God's Work/Our	
Hands	\$417.00
WELCA	\$120.00
Trunk or Treat	\$60.00
Veterans Drive	\$330.00
Blessing Boxes	\$340.00
Resurrection Gard	\$0.00
Building Repair	\$0.00
Malawi Trip	\$10.00
MIF	\$30.00
Food Pantry	\$157.50
Total	\$39,633.61

EVANGELICAL LUTHERAN CHURCH - Financial Summary JANUARY 10, 2026							
MISSION INVESTMENT FUND DISBURSEMENT ACCOUNT: (Balance as of DECEMBER 31, 2025)							
MISSION INVESTMENT FUND	BALANCE 11/30/2025	DEC Interest	DEC Expense	TOLLACK (Trust Point)	ENDOW. (ELCA)	Deposit Malawi Proceeds	BALANCE 12/31/2025
Building Improvement	\$280.95	\$0.13			\$81.42	\$275.32	\$637.82
Outreach	\$407.14	\$0.18			\$118.00	\$275.32	\$800.64
Operating Reserve	\$241.77	\$0.11			\$70.06	\$275.32	\$587.26
Radio Fund	\$924.16	\$0.42			\$267.82	\$275.31	\$1,467.71
MIF TOTAL	\$1,854.02	\$0.84	\$0.00	\$0.00	\$537.30	1101.27	\$3,493.43
TRUSTPOINT - Osborne J. Tollack Fund: (Balance as of January 9, 2026)							
TOTAL	\$129,693.87						
ELCA ENDOWMENT FUND POOLED TRUST: (Balance as of Nov. 30, 2025)							
Building Improvement	\$17,206.37						
Outreach	\$12,251.82						
Operating Reserve	\$11,313.70						
Radio	\$22,158.98						
TOTAL	\$62,930.87						
CO-OP CREDIT UNION: Balances as of December 31, 2025							
Membership Share	\$5.55						
ELC General Fund - Checking	\$7,302.91						
Sabbatical Fund - Money Mkt.	\$3,984.91						
Gifts/Mem Super Share Sav.	\$105,065.98						
15-Month Certificate	\$63,486.14	Loan Proceeds Invested (matures 1/11/27)					
TOTAL	\$179,845.49						
Roof/Sidewalk Loan	\$149,335.18						

2026 BUDGET PROPOSAL							
INCOME:	2022 ACTUAL	2023 ACTUAL	2024 BUDGET	2024 ACTUAL	2025 PROPOSED	2025 ACTUAL	2026 PROPOSAL
Weekly Offering	\$283,885.11	\$300,084.13	\$330,000.00	\$306,701.40	\$330,000.00	\$294,325.53	\$300,000.00
Other Offering	\$4,700.00	\$8,604.75	\$9,000.00	\$8,249.66	\$10,000.00	\$6,986.27	\$8,000.00
Miscellaneous Income	\$1,339.04	\$3,948.14	\$5,000.00	\$3,052.55	\$5,000.00	\$1,229.78	\$0.00
Designated Receipts		-\$679.37	\$0.00	\$0.00	\$0.00	\$0.00	\$0.00
Fund Transfers	\$23,000.00	\$17,000.00	\$10,000.00	\$0.00	\$10,000.00	0	\$5,000.00
<b>TOTAL INCOME:</b>	<b>\$312,924.80</b>	<b>\$328,957.65</b>	<b>\$354,000.00</b>	<b>\$318,003.61</b>	<b>\$355,000.00</b>	<b>\$302,541.58</b>	<b>\$313,000.00</b>
MISSION EXPENSE:							
Sewing Circle Expense			\$6,500.00	\$0.00	\$0.00	\$0.00	\$0.00
Northwest Synod	\$17,950.66	\$20,000.00	\$20,000.00	\$20,000.00	\$20,000.00	\$9,996.00	\$15,000.00
<b>TOTAL MISSION EXPENSE:</b>	<b>\$17,950.66</b>	<b>\$20,000.00</b>	<b>\$26,500.00</b>	<b>\$20,000.00</b>	<b>\$20,000.00</b>	<b>\$9,996.00</b>	<b>\$15,000.00</b>

2026 BUDGET PROPOSAL							
	2022 ACTUAL	2023 ACTUAL	2024 BUDGET	2024 ACTUAL	2025 PROPOSED	2025 ACTUAL	2026 PROPOSAL
<b>PROGRAM EXPENSE:</b>							
Worship/Music	\$22,863.59	\$21,014.52	\$25,560.00	\$21,135.75	\$29,500.00	\$20,874.68	\$19,700.00
Youth/Family	<b>-\$2,326.68</b>	\$838.60	\$3,000.00	\$1,306.67	\$3,000.00	\$3,963.33	\$1,500.00
Witness/Fellowship	\$1,742.60	\$107.66	\$5,900.00	\$4,773.90	\$9,000.00	\$2,925.73	\$4,000.00
Stewardship/Mission	\$1,677.46	\$1,548.02	\$5,500.00	\$3,548.35	\$6,000.00	\$4,935.97	\$3,500.00
Education	\$7,198.59	\$11,912.15	\$14,300.00	\$15,831.43	\$16,000.00	\$13,711.71	\$19,600.00
Continuing Education	\$1,466.21	\$5,810.49	\$3,000.00	\$289.70	\$2,000.00	\$712.01	\$1,000.00
Dairyland Conference	\$650.00	\$305.25	\$300.00	\$1,792.98	\$500.00	\$911.98	\$500.00
Synod Activities					\$1,000.00	\$0.00	\$1,000.00
Sabbatical Fund	\$0.00	\$0.00	\$3,000.00	\$0.00	\$3,000.00	\$0.00	\$0.00
Miscellaneous Out	\$3,360.42	-\$205.00	\$0.00	\$479.00	\$0.00	\$100.00	\$0.00
<b>TOTAL PROGRAM EXPENSE:</b>	<b>\$36,632.19</b>	<b>\$41,331.69</b>	<b>\$60,560.00</b>	<b>\$49,157.78</b>	<b>\$70,000.00</b>	<b>\$48,135.41</b>	<b>\$50,800.00</b>
<b>OPERATIONS EXPENSE:</b>							
Insurance	\$8,114.44	\$8,952.59	\$8,500.00	\$9,683.65	\$9,500.00	\$10,305.76	\$11,000.00
Office/Technology	\$24,738.89	\$21,687.65	\$22,000.00	\$20,574.50	\$20,000.00	\$15,089.08	\$13,000.00
Utilities	\$22,115.59	\$20,869.29	\$20,000.00	\$17,380.48	\$18,000.00	\$21,231.86	\$18,000.00
Mileage	\$1,109.90	\$2,126.68	\$2,000.00	\$2,555.52	\$2,000.00	\$2,829.92	\$3,000.00
Maintenance	\$10,861.44	\$9,853.52	\$12,000.00	\$9,394.85	\$13,700.00	\$17,884.85	\$10,000.00
<b>TOTAL OPERATIONS EXPENSE:</b>	<b>\$66,940.26</b>	<b>\$63,489.73</b>	<b>\$64,500.00</b>	<b>\$59,589.00</b>	<b>\$63,200.00</b>	<b>\$67,341.47</b>	<b>\$55,000.00</b>

<b>STAFF EXPENSE:</b>							
Salaries	\$152,537.05	\$126,549.74	\$137,871.00	\$79,013.18	\$123,968.00	\$74,295.40	\$125,473.00
Social Security	\$11,843.67	\$11,673.52	\$11,800.00	\$11,709.91	\$12,000.00	\$14,056.50	\$14,000.00
Housing	\$19,620.00	\$38,237.50	\$16,420.00	\$60,240.00	\$17,479.00	\$66,635.62	\$17,479.00
Pay in Lieu of Medical	\$0.00	\$0.00	\$26,600.00	\$24,383.26	\$26,600.00	\$26,605.42	\$26,600.00
Pension/Medical	\$13,266.74	\$16,175.63	\$16,000.00	\$15,458.16	\$16,000.00	\$14,741.29	\$8,000.00
<b>TOTAL STAFF EXPENSE:</b>	<b>\$197,267.46</b>	<b>\$192,636.39</b>	<b>\$208,691.00</b>	<b>\$190,804.51</b>	<b>\$196,047.00</b>	<b>\$196,334.23</b>	<b>\$191,552.00</b>
<b>TOTAL EXPENSES:</b>	<b>\$318,790.57</b>	<b>\$317,457.81</b>	<b>\$360,251.00</b>	<b>\$319,551.29</b>	<b>\$349,247.00</b>	<b>\$321,807.11</b>	<b>\$312,352.00</b>
<b>TOTAL INCOME:</b>	<b>\$312,924.80</b>	<b>\$328,957.65</b>	<b>\$354,000.00</b>	<b>\$318,003.61</b>	<b>\$350,000.00</b>	<b>\$302,541.58</b>	<b>\$313,000.00</b>
<b>BOTTOM LINE:</b>	<b>-\$5,865.77</b>	<b>\$11,499.84</b>	<b>-\$6,251.00</b>	<b>-\$1,547.68</b>	<b>\$753.00</b>	<b>-\$19,265.53</b>	<b>\$648.00</b>

2026 STAFFING PROPOSAL							
	2022 ACTUAL	2023 ACTUAL	2024 BUDGET	2024 ACTUAL	2025 PROPOSED	2025 ACTUAL	2026 PROPOSAL
Pastor Jenny	\$48,215.00	\$58,332.40	\$54,736.00	\$15,117.58	\$58,263.00	\$8,724.06	\$58,263.00
Dir. of Small Groups/Outreach	\$20,937.50	\$6,774.70	\$0.00	\$0.00	\$0.00	\$0.00	\$0.00
Office Manager	\$35,747.50	\$37,599.24	\$39,225.00	\$39,100.14	\$40,205.00	\$40,123.42	\$41,200.00
Custodian	\$22,916.58	\$23,843.40	\$24,875.00	\$24,795.46	\$25,500.00	\$25,447.92	\$26,000.00
Education Coordinator	\$4,600.00	\$5,843.23	\$8,100.00	\$8,074.93	\$8,100.00	\$8,074.93	\$6,500.00
*Youth Ministry Coordinator						<b>\$3,000.00</b>	\$6,500.00
Technology Support	\$6,976.00	\$0.00	\$0.00	\$0.00	\$0.00	\$0.00	\$0.00
Choir Directors	\$0.00	\$0.00	\$1,800.00	\$0.00	\$1,800.00	<b>\$1,800.00</b>	\$1,800.00
Organist	\$7,930.00	\$8,590.00	\$9,135.00	\$7,770.00	\$10,000.00	\$8,900.00	\$8,500.00
Social Security	\$11,843.67	\$11,673.52	\$11,800.00	\$11,709.91	\$12,000.00	\$14,056.50	\$14,000.00
Housing	\$19,620.00	\$38,237.50	\$16,420.00	\$60,240.00	\$17,479.00	\$66,635.62	\$17,479.00
Pension/Medical	\$13,266.74	\$16,175.63	\$16,000.00	\$15,458.16	\$16,000.00	\$14,741.29	\$14,000.00
Pay in Lieu of Medical	\$26,606.00	\$0.00	\$26,600.00	\$24,383.26	\$26,600.00	\$26,605.42	\$26,600.00
<b>TOTAL:</b>	<b>\$218,658.99</b>	<b>\$207,069.62</b>	<b>\$208,691.00</b>	<b>\$206,649.44</b>	<b>\$215,947.00</b>	<b>\$218,109.16</b>	<b>\$220,842.00</b>
<b>SALARIES ONLY TOTAL:</b>	<b>\$127,816.58</b>	<b>\$126,549.74</b>	<b>\$118,836.00</b>	<b>\$79,013.18</b>	<b>\$123,968.00</b>	<b>\$74,295.40</b>	<b>\$125,463.00</b>
(Pastor, Office, Custodial): Does not include housing allowance or Pay in Lieu of Med.							
SALARIES of PASTOR, OFFICE, CUSTODIAL:							
Including Housing and Pay in Lieu of Med.							
	\$158,012.54	\$161,856.00	\$163,636.44	\$168,047.00	\$167,536.44	\$169,542.00	

## THROUGH YOUR GENEROSITY, GOD IS AT WORK ACROSS THE ELCA.

### MISSION SUPPORT

A portion of your offering, called Mission Support, advances the ministry of our church, helping the ELCA nurture Christian community, raise up leaders, serve our neighbors and strive for justice.

### ELCA WORLD HUNGER

Part of our church's long tradition of meeting human needs, ELCA World Hunger testifies to our hope for and commitment to God's promise of a time when we will hunger and thirst no more. ELCA World Hunger walks alongside communities in more than 60 countries — including the United States — to create unique solutions to hunger and poverty.

### LUTHERAN DISASTER RESPONSE

Lutheran Disaster Response shares God's hope, healing and renewal with people whose lives have been disrupted by disasters in the United States and around the world. When the dust settles and the headlines change, we stay to provide ongoing assistance to those in need.

### WHERE NEEDED MOST

Where Needed Most supports the powerful ways we work together around the world — supporting leaders, inspiring young people, fueling ministries and championing global mission. Gifts to Where Needed Most support and sustain the people, congregations, synods and ministries working around the world to realize the hope-filled future God promises.



Evangelical  
Lutheran Church  
in America

Sign up to hear more stories of impact from the ELCA churchwide organization at [ELCA.org/subscribe](https://www.elca.org/subscribe).

Read about Mission Support and learn more at [LivingLutheran.org/SOFIA](https://www.livinglutheran.org/SOFIA).